

THE PRYOR



Exterior A

2,489 - 3,363 sq. ft.

3 - 5 Bedrooms

2 - 5 Full Baths

1 Half Bath

2 - 3 Car Garage



Exterior B

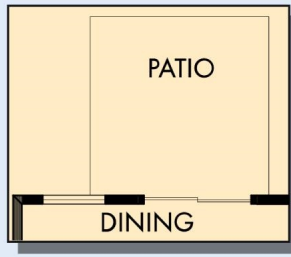


Exterior C

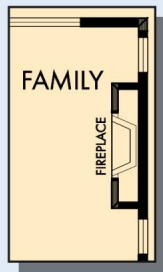
David Weekley
Homes

THE PRYOR

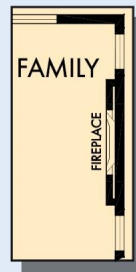
2,489 - 3,363 sq. ft. • 3 - 5 Bedrooms • 2 - 5 Full Baths • 1 Half Bath • 2 - 3 Car Garage



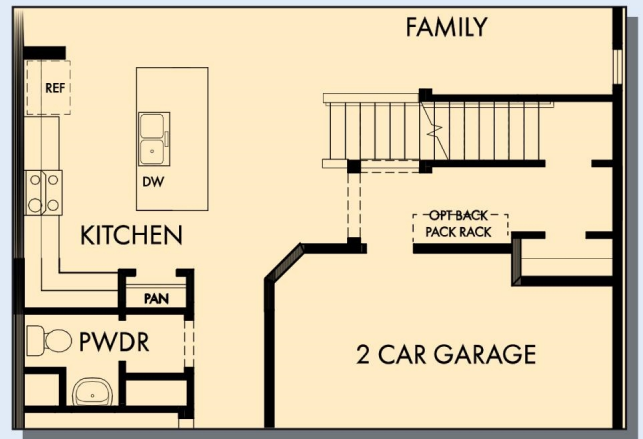
OPTIONAL PATIO
AT DINING



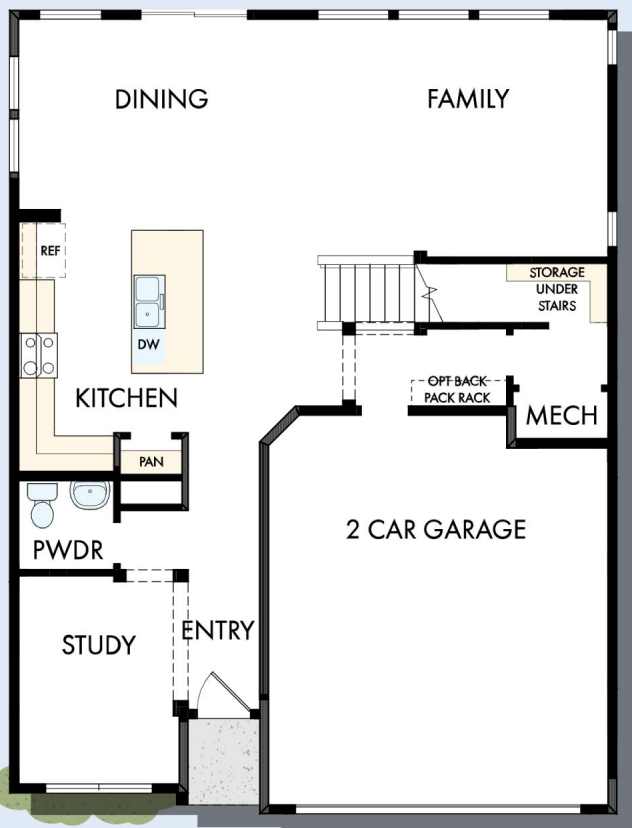
OPTIONAL WALL FIREPLACE
AT FAMILY



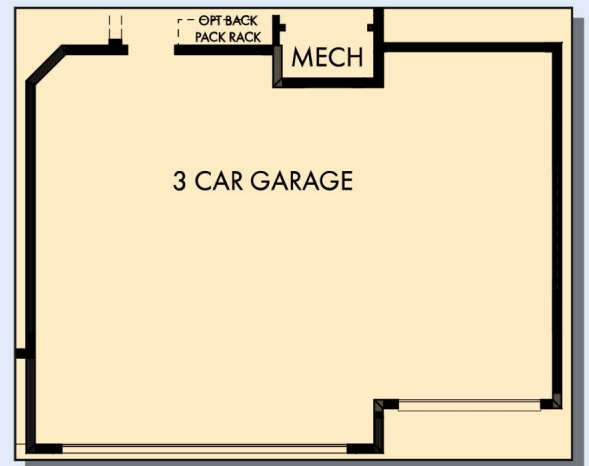
OPTIONAL ALTERNATE
WALL
FIREPLACE
AT FAMILY



FIRST FLOOR WITH OPTIONAL BASEMENT

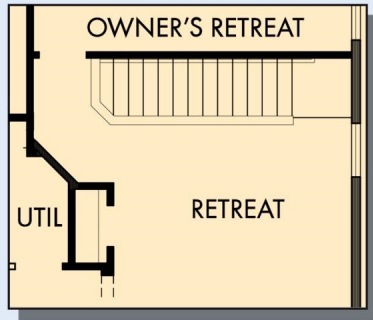


FIRST FLOOR



OPTIONAL 3 CAR GARAGE

THE PRYOR



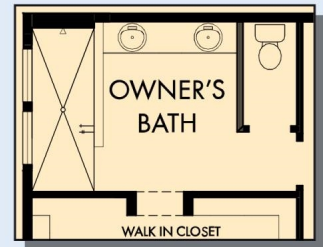
SECOND FLOOR WITH OPTIONAL
BASEMENT



OPTIONAL BEDROOM 4



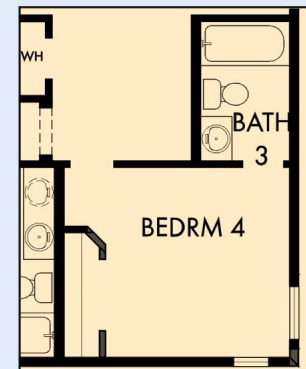
OPTIONAL SLIDE IN TUB
WITH SEPARATE SHOWER
AT OWNER'S BATH



OPTIONAL SUPER SHOWER
AT OWNER'S BATH



SECOND FLOOR

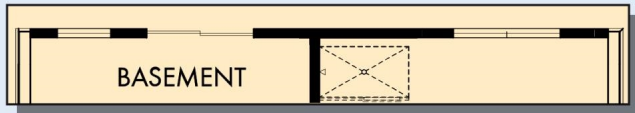


OPTIONAL BEDROOM 4
WITH BATH 3 AT RETREAT

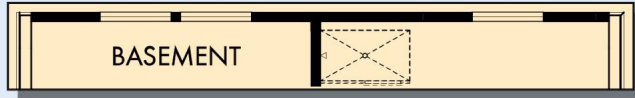
For additional options, please visit DavidWeekleyHomes.com

DavidWeekleyHomes.com

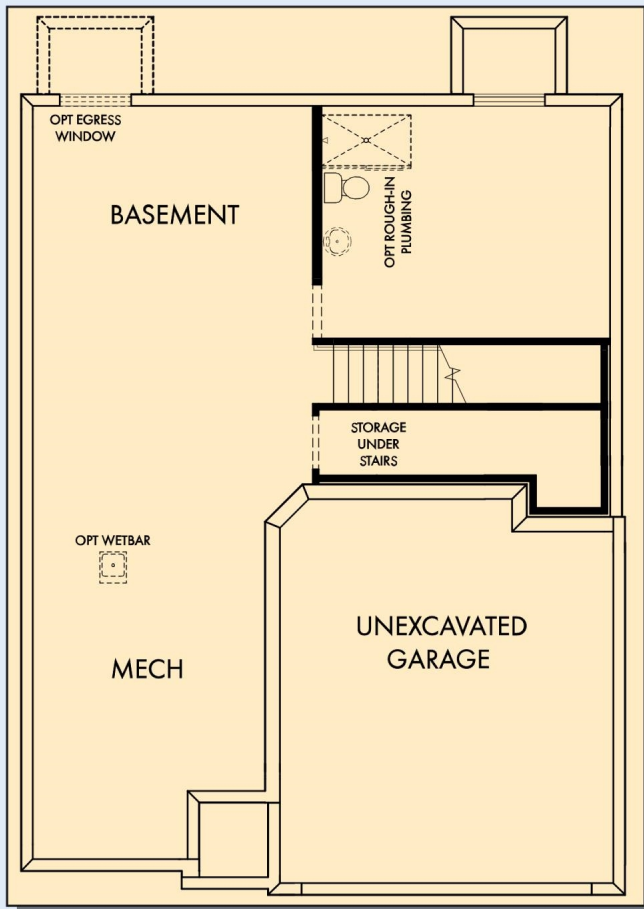
THE PRYOR



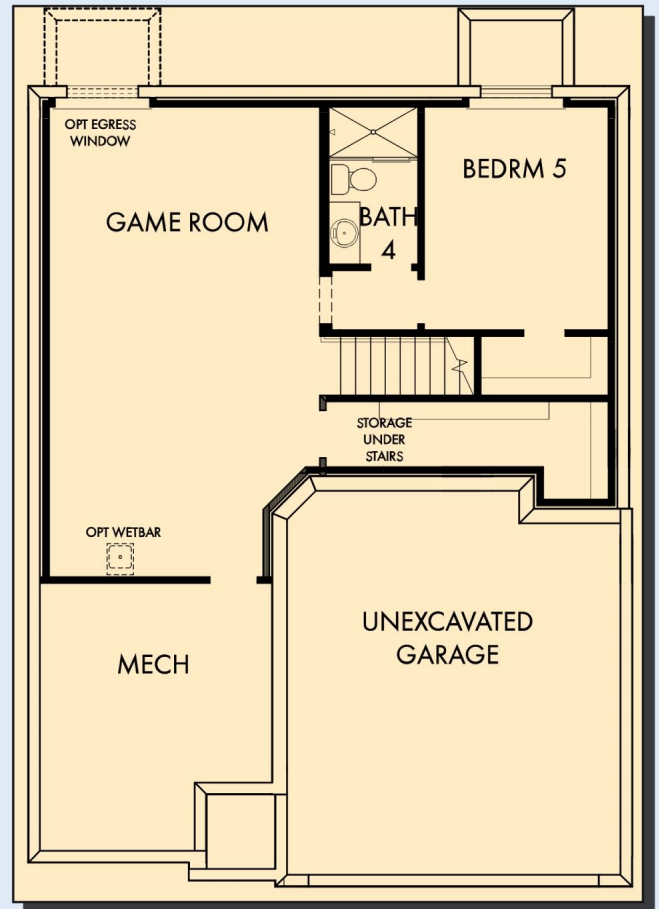
OPTIONAL WALKOUT BASEMENT



OPTIONAL DAYLIGHT BASEMENT



OPTIONAL BASEMENT



OPTIONAL GAME ROOM WITH BEDROOM 5
AND BATH 4 AT BASEMENT

For additional options, please visit DavidWeekleyHomes.com

DavidWeekleyHomes.com



See a David Weekley Homes Sales Consultant for details. Prices, plans, dimensions, features, specifications, materials, and availability of homes or communities are subject to change without notice or obligation. Illustrations are artist's depictions only and may differ from completed improvements. Copyright © 2025 David Weekley Homes - All Rights Reserved. Minneapolis/St. Paul, MN