

THE PRYOR



Exterior A

2,489 - 3,363 sq. ft.

3 - 5 Bedrooms

2 - 4 Full Baths

1 Half Bath

2 - 3 Car Garage



Exterior B

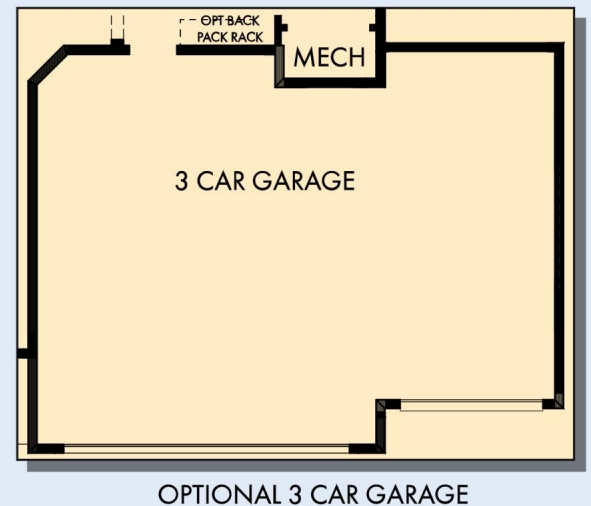
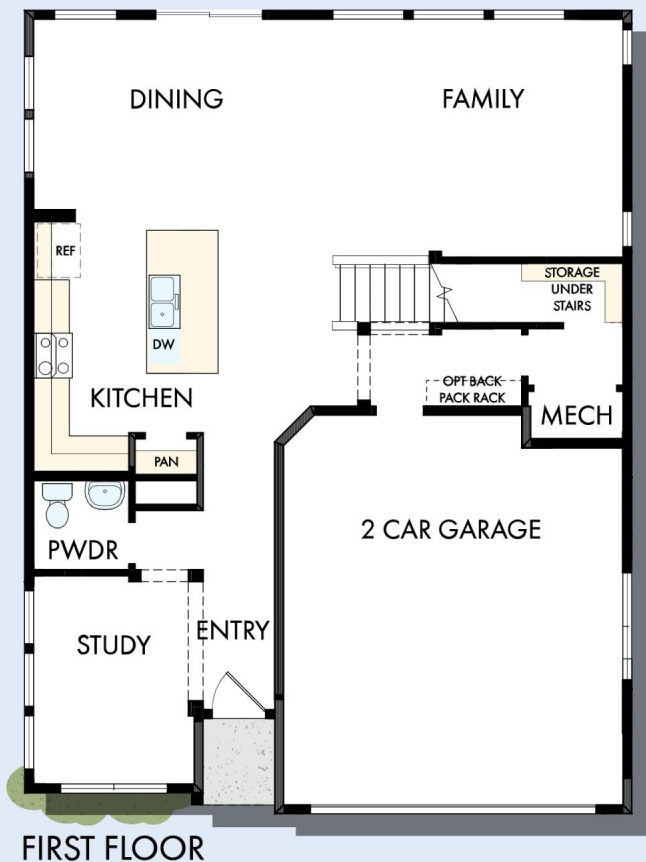
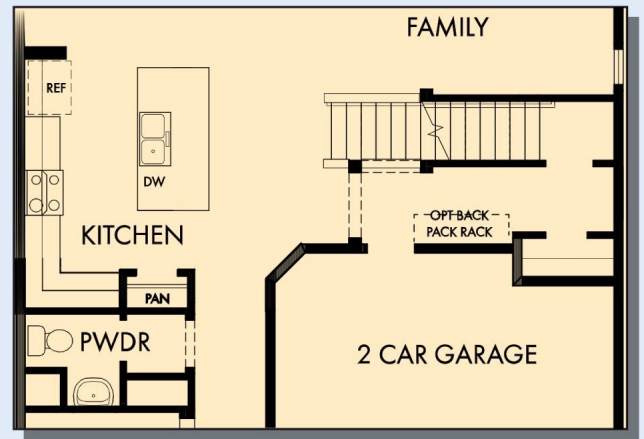
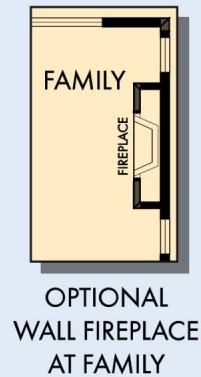


Exterior C

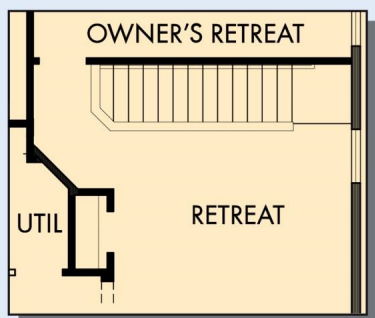
David Weekley
Homes

THE PRYOR

2,489 - 3,363 sq. ft. • 3 - 5 Bedrooms • 2 - 4 Full Baths • 1 Half Bath • 2 - 3 Car Garage



THE PRYOR



SECOND FLOOR WITH OPTIONAL BASEMENT



OPTIONAL BEDROOM 4



OPTIONAL SLIDE IN TUB
WITH SEPARATE SHOWER
AT OWNER'S BATH



OPTIONAL SUPER SHOWER
AT OWNER'S BATH

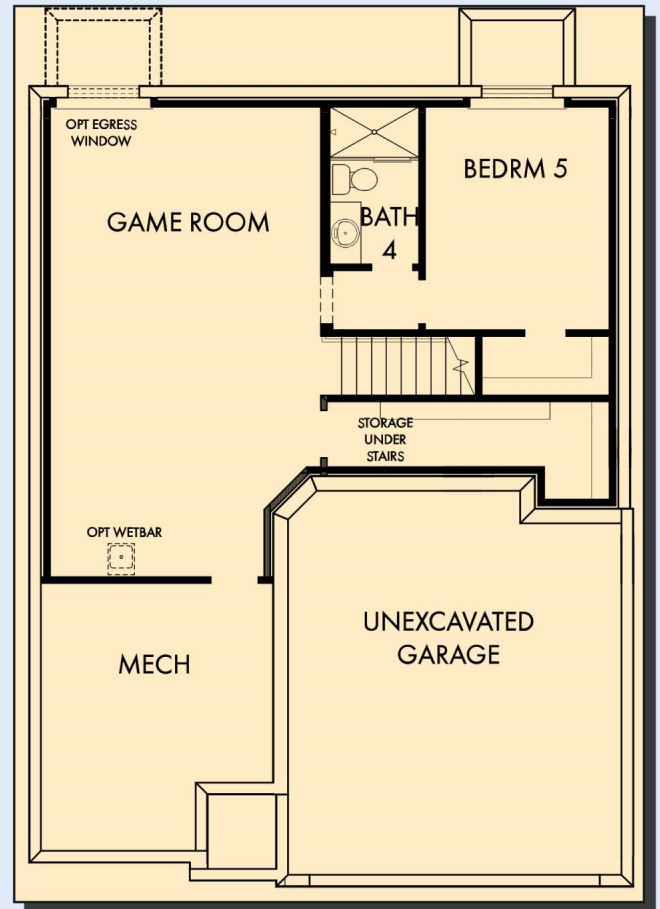
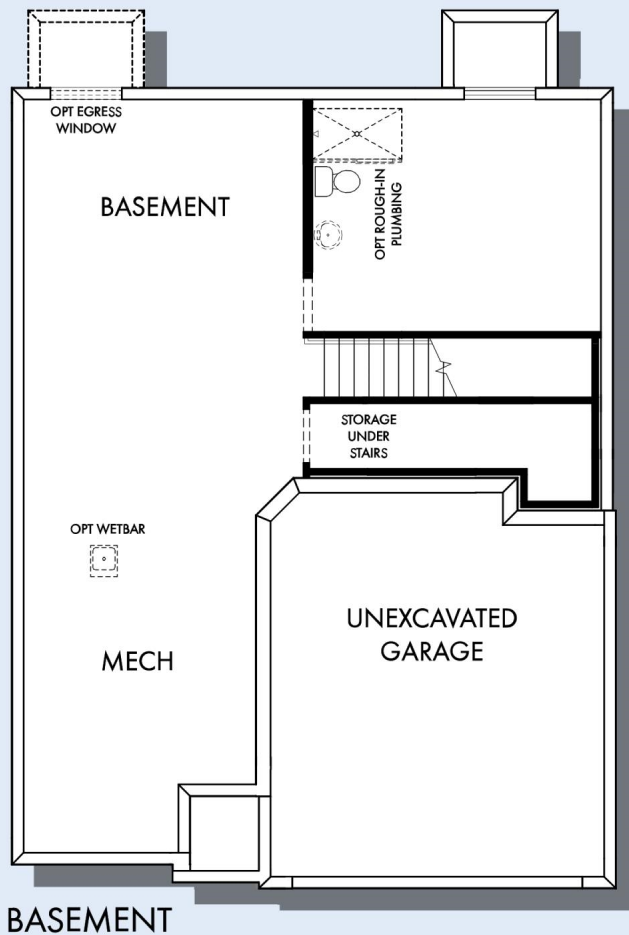
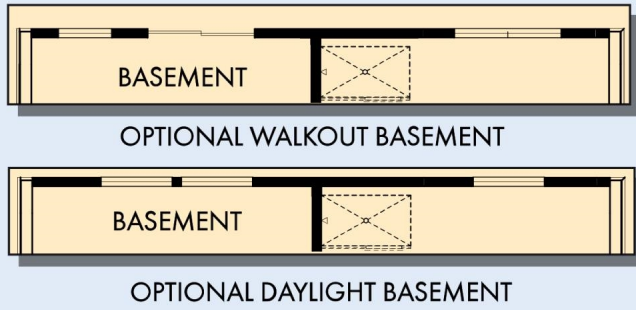


SECOND FLOOR

For additional options, please visit DavidWeekleyHomes.com

DavidWeekleyHomes.com

THE PRYOR



OPTIONAL GAME ROOM WITH BEDROOM 5
AND BATH 4 AT BASEMENT

For additional options, please visit DavidWeekleyHomes.com



See a David Weekley Homes Sales Consultant for details. Prices, plans, dimensions, features, specifications, materials, and availability of homes or communities are subject to change without notice or obligation. Illustrations are artist's depictions only and may differ from completed improvements. Copyright © 2025 David Weekley Homes - All Rights Reserved. Minneapolis/St. Paul, MN

DavidWeekleyHomes.com