

# THE IVYRIDGE



Exterior E

2,673 - 2,734 sq. ft.

3 - 4 Bedrooms

2 Full Baths

1 Half Bath

2 Car Garage

## Perez Family



### Best Homebuying Experience Ever

We have had several homes built in the past by several homebuilders. Our experience with David Weekley was the best we have ever had. The attention to detail and the customer service were exceptional. Both our sales person and Project Manager kept us well informed and treated us like family. Thanks David Weekley

## Meg S.



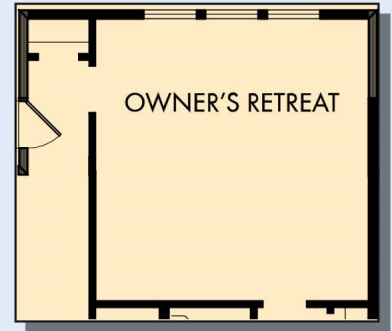
### Truly treated us like family!!!

We enjoyed every part of the home building process. It was amazing! Our builder was always keeping us informed and really went above and beyond to ensure that we love our home. Our warranty rep is outstanding and continues to take care of our every need. I couldn't have asked for a better experience. Our builder and warranty rep continue to be there for us as a family. While our interactions with the DW Family have been highly professional, we are also lucky enough to be able to call them some of our greatest friends! Wouldn't change a thing!

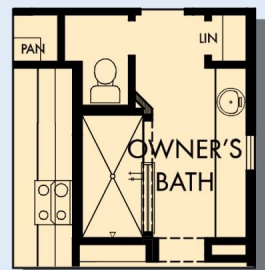
David Weekley  
Homes

# THE IVYRIDGE

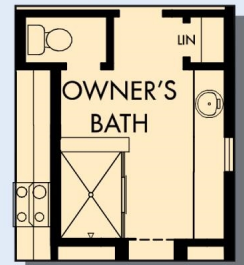
2,673 - 2,734 sq. ft. • 3 - 4 Bedrooms • 2 Full Baths • 1 Half Bath • 2 Car Garage



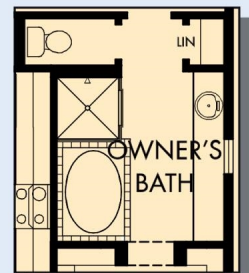
OPTIONAL EXTENDED OWNER'S RETREAT



OPTIONAL WALK-IN SHOWER AT OWNER'S BATH

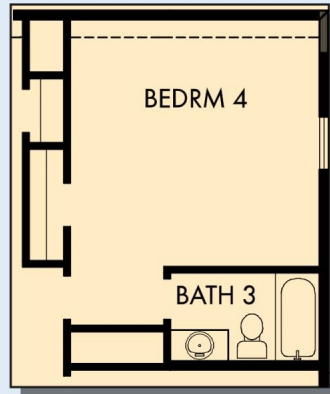


OPTIONAL STAND ALONE SHOWER AT OWNER'S BATH



OPTIONAL DROP-IN TUB WITH SEPARATE SHOWER AT OWNER'S BATH

# THE IVYRIDGE



OPTIONAL BEDROOM 4  
WITH BATH 3 AT GAMEROOM



SECOND FLOOR

For additional options, please visit [DavidWeekleyHomes.com](http://DavidWeekleyHomes.com)

See a David Weekley Homes Sales Consultant for details. Prices, plans, dimensions, features, specifications, materials, and availability of homes or communities are subject to change without notice or obligation. Illustrations are artist's depictions only and may differ from completed improvements. Copyright © 2024 David Weekley Homes - All Rights Reserved. Houston, TX



**DavidWeekleyHomes.com**