

THE CREEDMONT



Exterior H

1,653 - 1,707 sq. ft.

3 Bedrooms

2 Full Baths

2 Car Garage



Exterior I

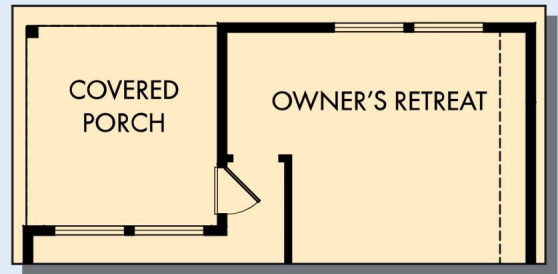
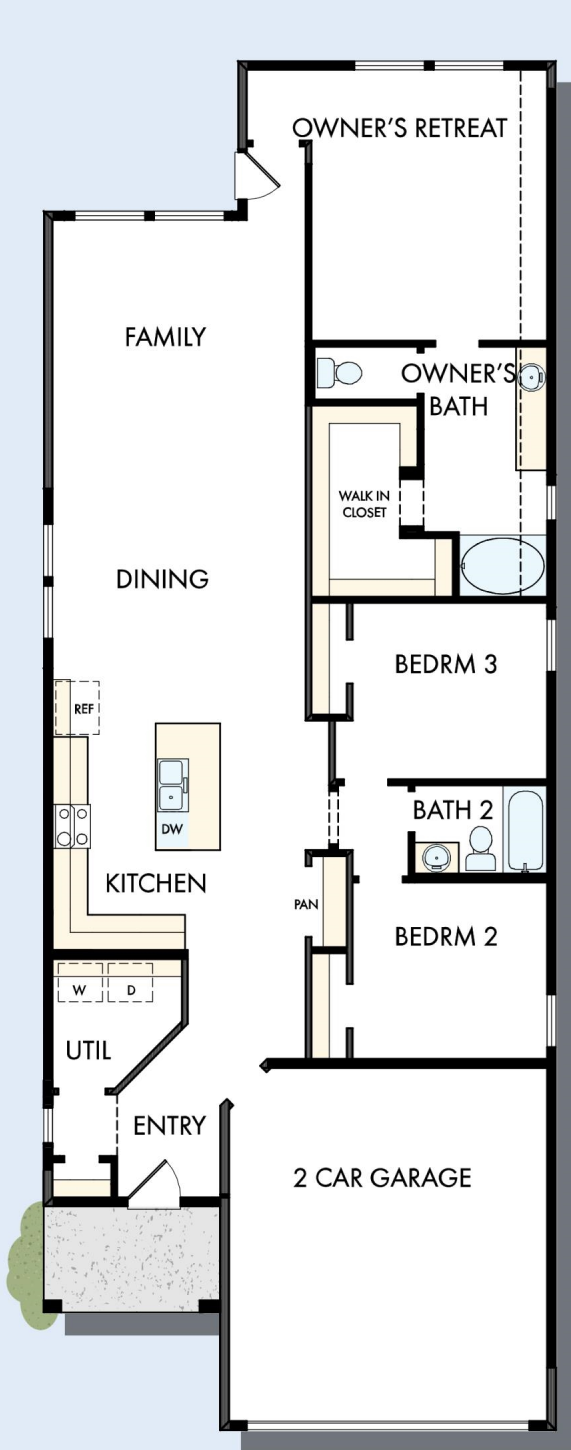


Exterior J

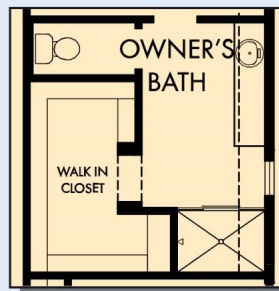
David Weekley
Homes

THE CREEDMONT

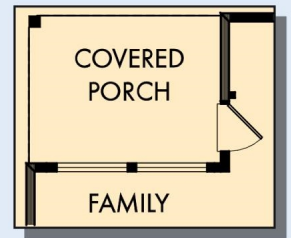
1,653 - 1,707 sq. ft. • 3 Bedrooms • 2 Full Baths • 2 Car Garage



OPTIONAL EXTENDED OWNER'S RETREAT WITH COVERED PORCH



OPTIONAL SHOWER AT OWNER'S BATH



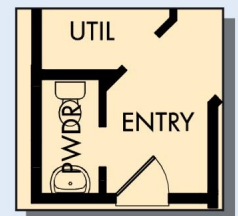
OPTIONAL COVERED PORCH AT FAMILY



OPTIONAL DROP-IN TUB WITH SEPERATE SHOWER AT OWNER'S BATH



OPTIONAL WALK IN SHOWER AT OWNER'S BATH



OPTIONAL POWDER BATH AT ENTRY

2894 in 1495 HOU

For additional options, please visit DavidWeekleyHomes.com

1/12/2024

See a David Weekley Homes Sales Consultant for details. Prices, plans, dimensions, features, specifications, materials, and availability of homes or communities are subject to change without notice or obligation. Illustrations are artist's depictions only and may differ from completed improvements. Copyright © 2024 David Weekley Homes - All Rights Reserved. Houston, TX

DavidWeekleyHomes.com

