

THE PARKMOOR



Exterior A

2,076 - 3,170 sq. ft.

3 - 4 Bedrooms

2 - 3 Full Baths

1 Half Bath

2 Car Garage



Exterior B



Exterior C

David Weekley
Homes

THE PARKMOOR

2,076 - 3,170 sq. ft. • 3 - 4 Bedrooms • 2 - 3 Full Baths • 1 Half Bath • 2 Car Garage



A426 in 5341 SLC

For additional options, please visit DavidWeekleyHomes.com

3/21/2025

DavidWeekleyHomes.com

THE PARKMOOR



OPTIONAL SUPER SHOWER
AT OWNER'S BATH



OPTIONAL FREE STANDING TUB
WITH SEPARATE SHOWER
AT OWNER'S BATH

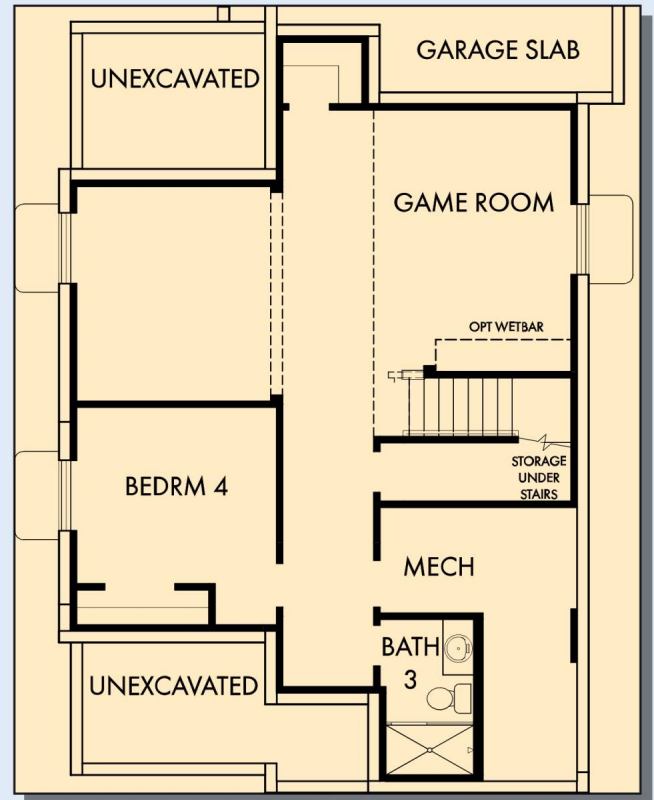
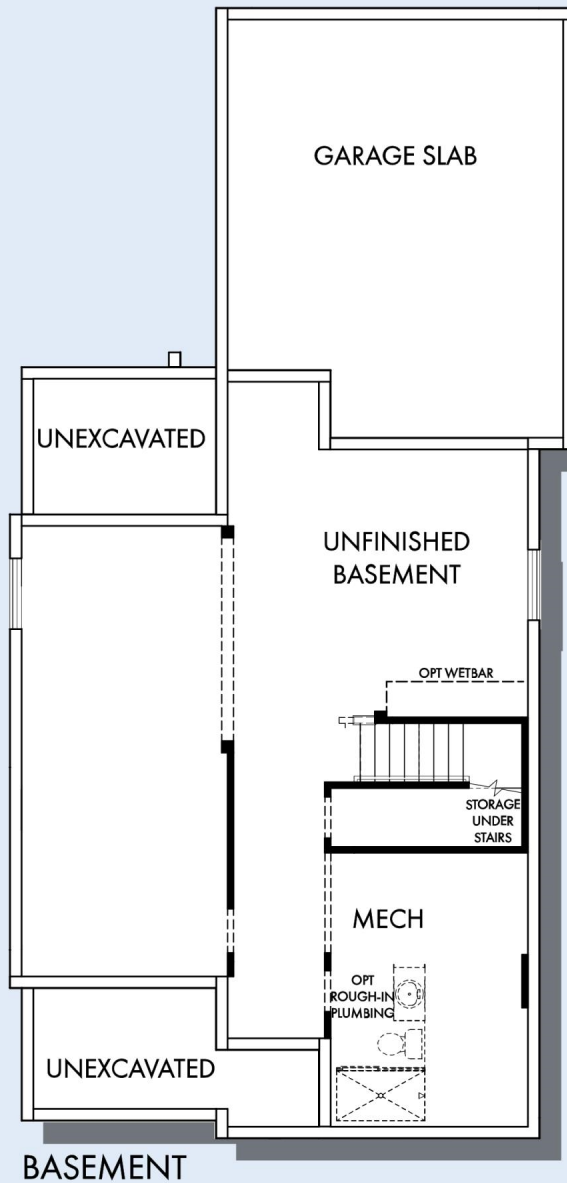


SECOND FLOOR

For additional options, please visit DavidWeekleyHomes.com

DavidWeekleyHomes.com

THE PARKMOOR



BASEMENT WITH OPTIONAL GAME ROOM AND
BEDROOM 4 WITH BATH 3

For additional options, please visit DavidWeekleyHomes.com

DavidWeekleyHomes.com

See a David Weekley Homes Sales Consultant for details.
Prices, plans, dimensions, features, specifications, materials,
and availability of homes or communities are subject to
change without notice or obligation. Illustrations are artist's
depictions only and may differ from completed improvements.
Copyright © 2025 David Weekley Homes - All Rights Reserved.
Salt Lake City, UT

