

THE BEEKMAN



Exterior A

2,559 - 3,115 sq. ft.

3 - 5 Bedrooms

2 - 3 Full Baths

1 Half Bath

2 Car Garage



Exterior B

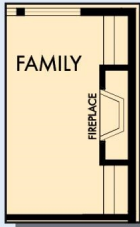


Exterior C

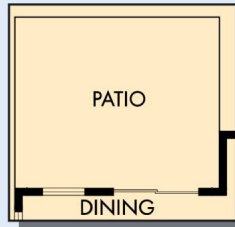
David Weekley
Homes

THE BEEKMAN

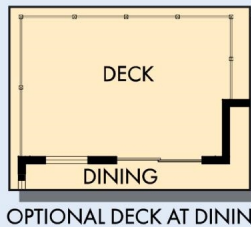
2,559 - 3,115 sq. ft. • 3 - 5 Bedrooms • 2 - 3 Full Baths • 1 Half Bath • 2 Car Garage



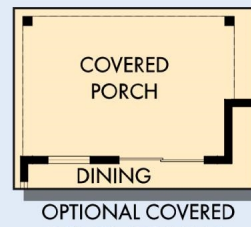
OPTIONAL WALL FIREPLACE WITH BUILT IN CABINETS AT FAMILY



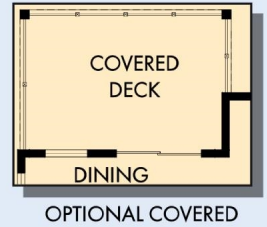
OPTIONAL EXTENDED PATIO AT DINING



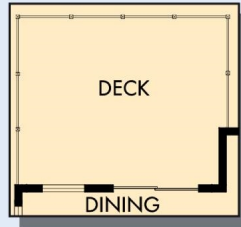
OPTIONAL DECK AT DINING



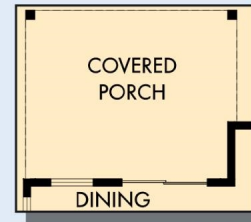
OPTIONAL COVERED PORCH AT DINING



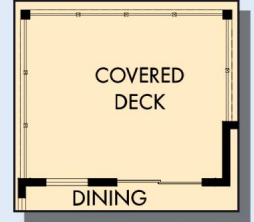
OPTIONAL COVERED DECK AT DINING



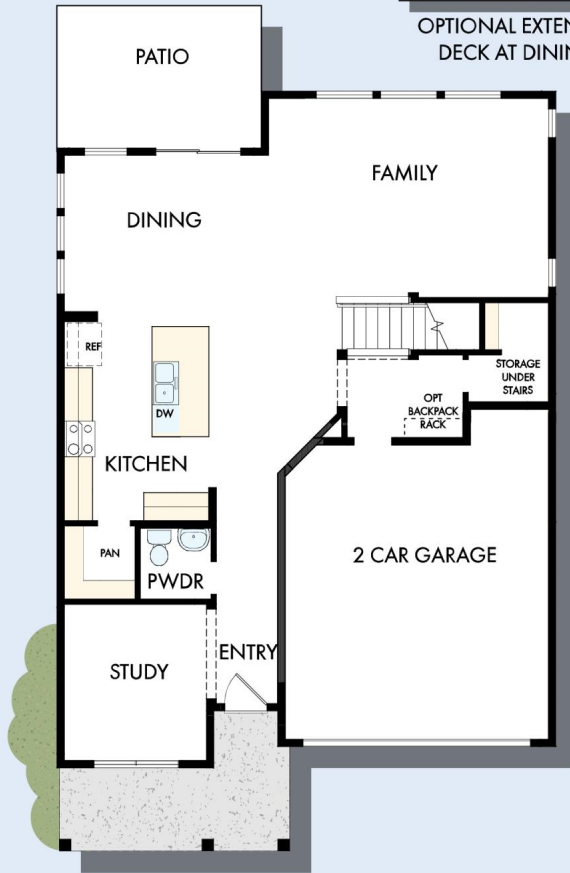
OPTIONAL EXTENDED DECK AT DINING



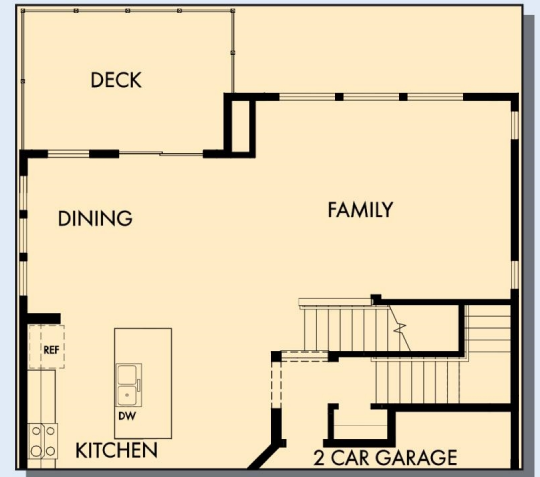
OPTIONAL EXTENDED COVERED PORCH AT DINING



OPTIONAL EXTENDED COVERED DECK AT DINING



FIRST FLOOR



FIRST FLOOR WITH OPTIONAL BASEMENT

THE BEEKMAN



OPTIONAL BEDROOM 4
AT RETREAT



OPTIONAL DROP-IN
TUB WITH SEPARATE
SHOWER AT
OWNER'S BATH



OPTIONAL FREE
STANDING TUB WITH
SEPARATE SHOWER AT
OWNER'S BATH



OPTIONAL SUPER
SHOWER AT
OWNER'S BATH



SECOND FLOOR

For additional options, please visit DavidWeekleyHomes.com

See a David Weekley Homes Sales Consultant for details. Prices, plans, dimensions, features, specifications, materials, and availability of homes or communities are subject to change without notice or obligation. Illustrations are artist's depictions only and may differ from completed improvements. Copyright © 2024 David Weekley Homes - All Rights Reserved. POR, OR

DavidWeekleyHomes.com

