

THE PRYOR



Exterior A

2,489 - 3,363 sq. ft.

3 - 5 Bedrooms

2 - 5 Full Baths

1 Half Bath

2 - 3 Car Garage



Exterior B

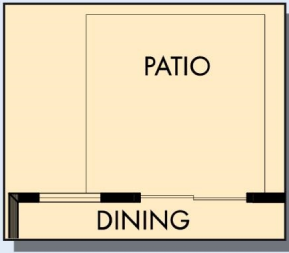


Exterior C

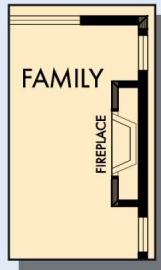
David Weekley
Homes

THE PRYOR

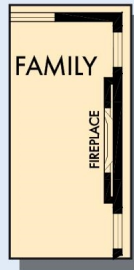
2,489 - 3,363 sq. ft. • 3 - 5 Bedrooms • 2 - 5 Full Baths • 1 Half Bath • 2 - 3 Car Garage



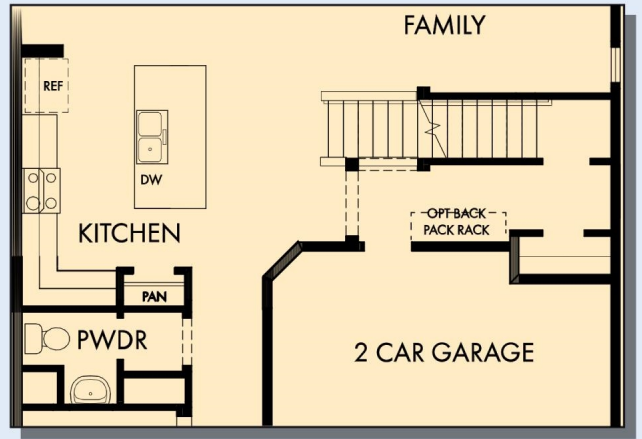
OPTIONAL PATIO AT DINING



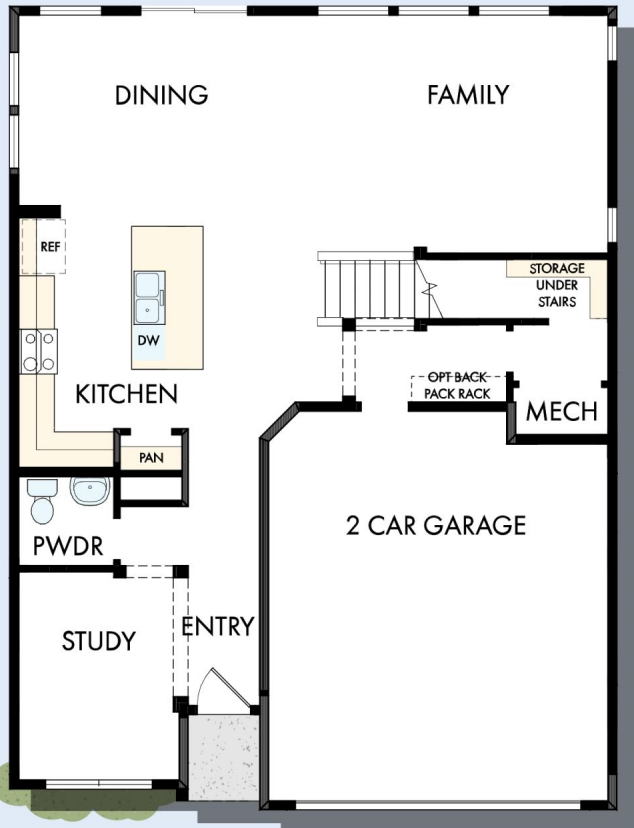
OPTIONAL WALL FIREPLACE AT FAMILY



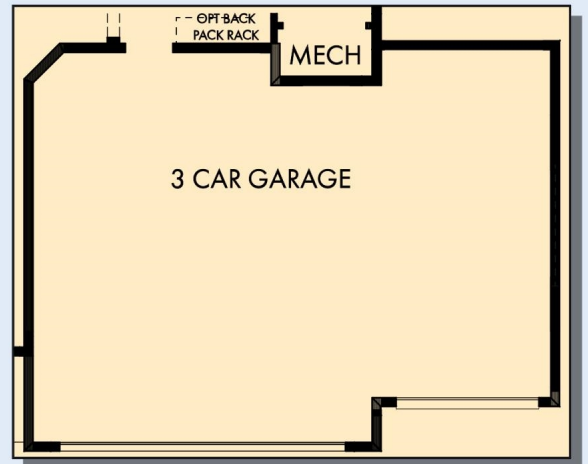
OPTIONAL ALTERNATE WALL FIREPLACE AT FAMILY



FIRST FLOOR WITH OPTIONAL BASEMENT

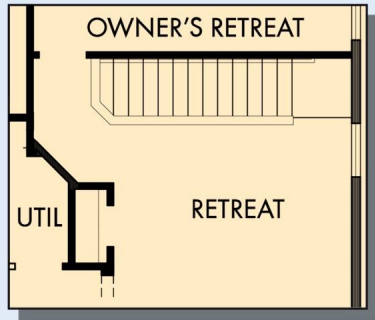


FIRST FLOOR



OPTIONAL 3 CAR GARAGE

THE PRYOR



SECOND FLOOR WITH OPTIONAL BASEMENT



OPTIONAL BEDROOM 4



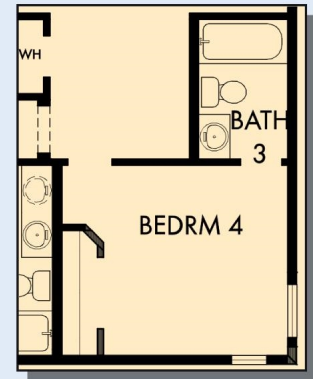
OPTIONAL SLIDE IN TUB WITH SEPARATE SHOWER AT OWNER'S BATH



OPTIONAL SUPER SHOWER AT OWNER'S BATH



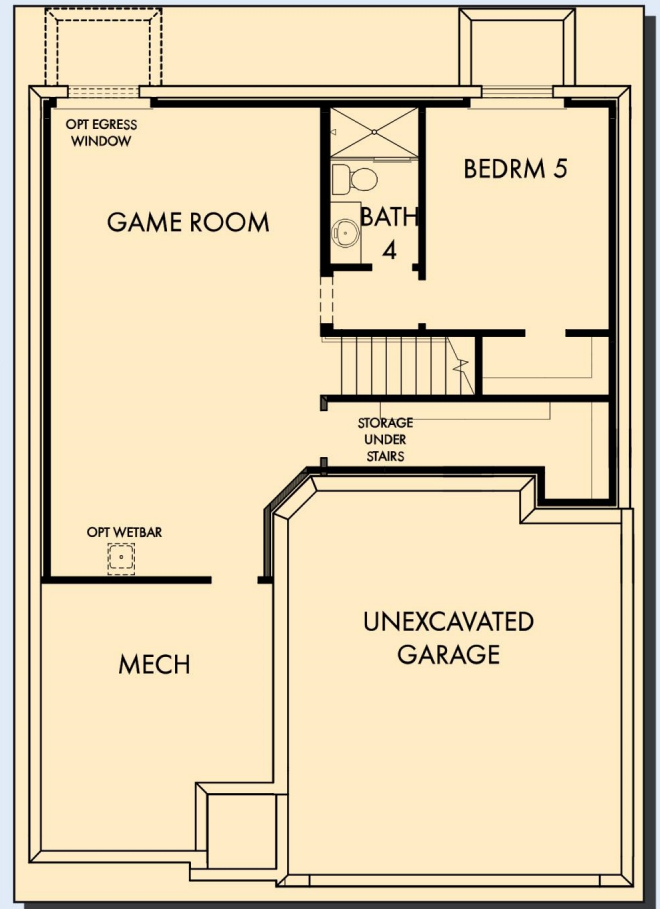
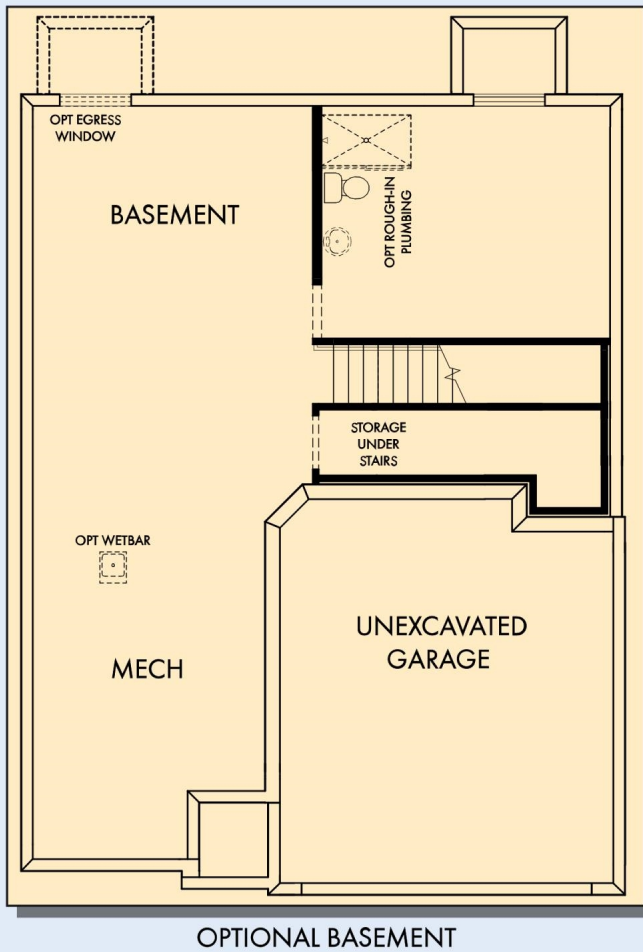
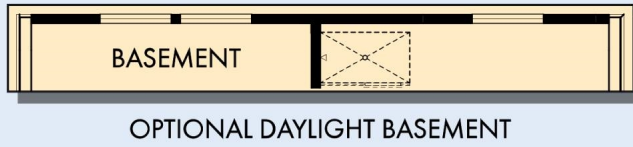
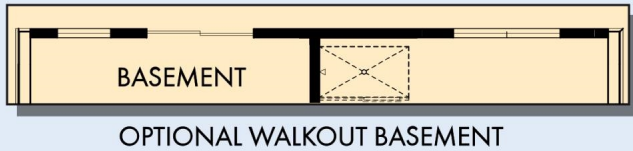
SECOND FLOOR



OPTIONAL BEDROOM 4 WITH BATH 3 AT RETREAT

For additional options, please visit DavidWeekleyHomes.com

THE PRYOR



OPTIONAL GAME ROOM WITH BEDROOM 5 AND BATH 4 AT BASEMENT

For additional options, please visit DavidWeekleyHomes.com

See a David Weekley Homes Sales Consultant for details. Prices, plans, dimensions, features, specifications, materials, and availability of homes or communities are subject to change without notice or obligation. Illustrations are artist's depictions only and may differ from completed improvements. Copyright © 2025 David Weekley Homes - All Rights Reserved. Minneapolis/St. Paul, MN

DavidWeekleyHomes.com

