

THE PUTMAN



Exterior A

3,096 - 4,556 sq. ft.

4 - 6 Bedrooms

2 - 4 Full Baths

1 Half Bath

3 - 4 Car Garage



Exterior B

Lauren L.



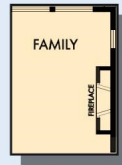
Home is where the heart is.

Years we waited to buy a house. Painful years of raising children in someone else's home. Years I got to ponder what it would be like to have something of my own. I envisioned my children sitting in their home, playing in their rooms, running through their yard...and the days of waiting were over, all of my research paid off. We bought the house of my dreams and were given the best sales associate and builder, down to my warranty specialist. Everything was easy and seamless. I felt like we were working together, like a team. Now, I have a beautiful house that I know was built with integrity. I could not be more grateful.

**David Weekley
Homes**

THE PUTMAN

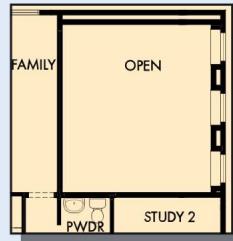
3,096 - 4,556 sq. ft. • 4 - 6 Bedrooms • 2 - 4 Full Baths • 1 Half Bath • 3 - 4 Car Garage



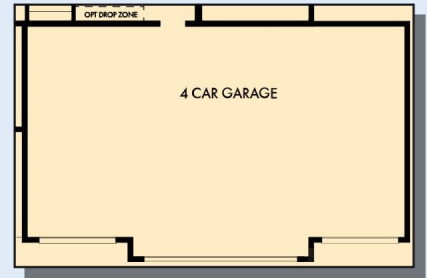
OPTIONAL
WALL FIREPLACE
AT FAMILY



OPTIONAL BEDROOM 5
WITH BATH3 AT STUDY 2



FIRST FLOOR WITH
OPTIONAL ATHLETIC COURT



OPTIONAL 4 CAR GARAGE



FIRST FLOOR

THE PUTMAN



OPTIONAL FREE STANDING
TUB WITH SEPARATE SHOWER
AT OWNER'S BATH



OPTIONAL SUPER SHOWER
AT OWNER'S BATH



OPTIONAL BEDROOM 4
AT RETREAT

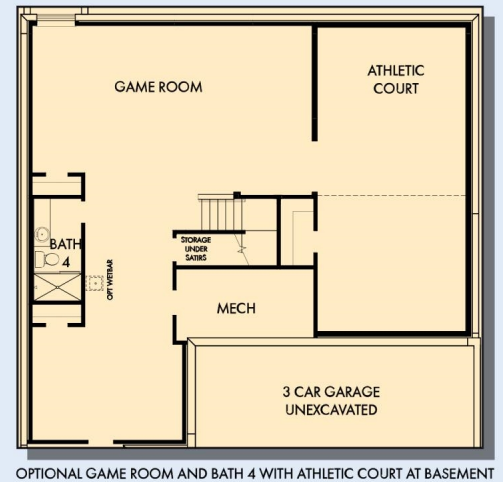
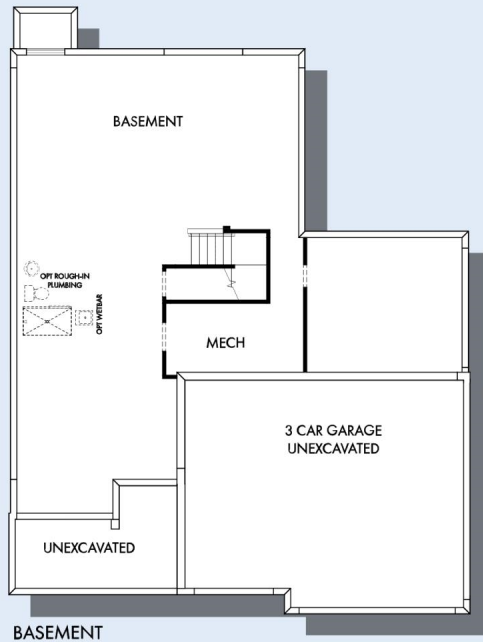
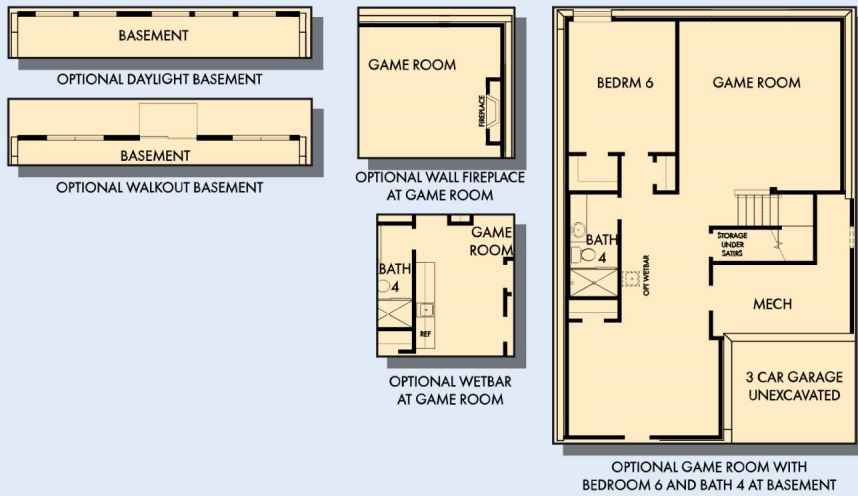


SECOND FLOOR

For additional options, please visit DavidWeekleyHomes.com

DavidWeekleyHomes.com

THE PUTMAN



OPTIONAL GAME ROOM AND BATH 4 WITH ATHLETIC COURT AT BASEMENT



OPTIONAL GAME ROOM, BEDROOM 6 AND BATH 4 WITH ATHLETIC COURT AT BASEMENT

For additional options, please visit DavidWeekleyHomes.com

DavidWeekleyHomes.com

See a David Weekley Homes Sales Consultant for details. Prices, plans, dimensions, features, specifications, materials, and availability of homes or communities are subject to change without notice or obligation. Illustrations are artist's depictions only and may differ from completed improvements. Copyright © 2025 David Weekley Homes - All Rights Reserved. Minneapolis/St. Paul, MN

