

THE INGLEMAN



Exterior A



Exterior B

2,925 - 2,958 sq. ft.

4 - 5 Bedrooms

2 - 3 Full Baths

1 Half Bath

2 Car Garage

Shane



We're living our fairytale thanks to David Weekley

We can't say enough about the level of quality and care we received while building our home. Our builder was with us every step of the way to make sure our every need and desire was being met! The team truly went above and beyond at every turn to give us the home of our dreams! We will definitely recommend David Weekley to anyone looking to build a new home!

**David Weekley
Homes**

THE INGLEMAN

2,925 - 2,958 sq. ft. • 4 - 5 Bedrooms • 2 - 3 Full Baths • 1 Half Bath • 2 Car Garage



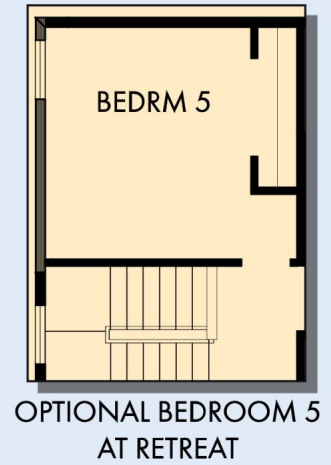
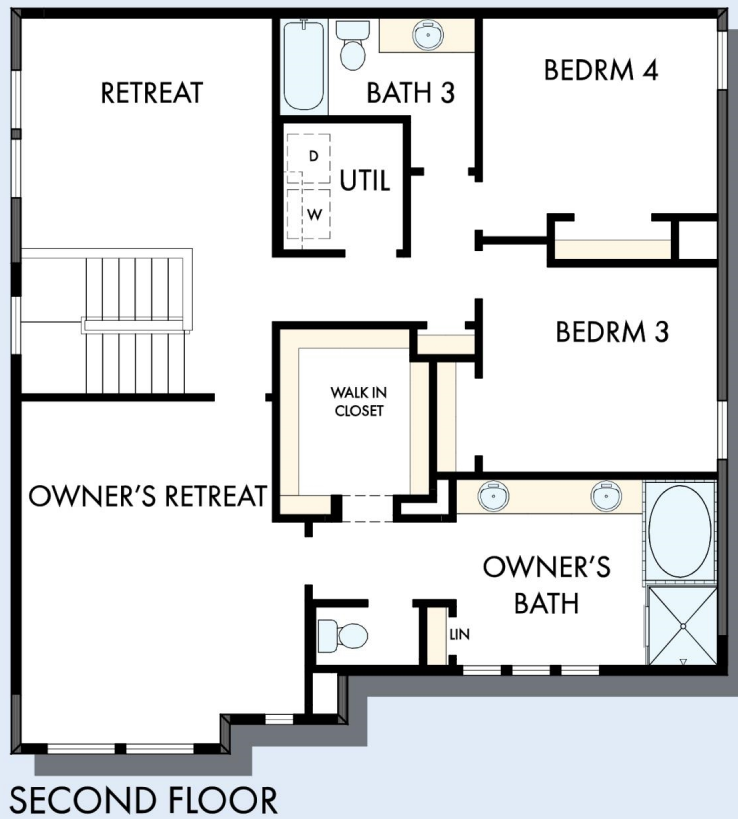
B624 in 6828 POR

For additional options, please visit DavidWeekleyHomes.com

9/4/2024

DavidWeekleyHomes.com

THE INGLEMAN



For additional options, please visit DavidWeekleyHomes.com

See a David Weekley Homes Sales Consultant for details. Prices, plans, dimensions, features, specifications, materials, and availability of homes or communities are subject to change without notice or obligation. Illustrations are artist's depictions only and may differ from completed improvements. Copyright © 2024 David Weekley Homes - All Rights Reserved. POR, OR

DavidWeekleyHomes.com

