

# THE FISHBECK



Exterior A



Exterior B

2,298 - 2,346 sq. ft.

3 - 4 Bedrooms

2 - 3 Full Baths

0 - 1 Half Baths

3 Car Garage

**Crystal W.**



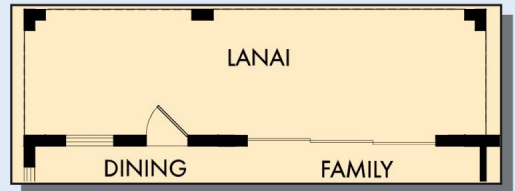
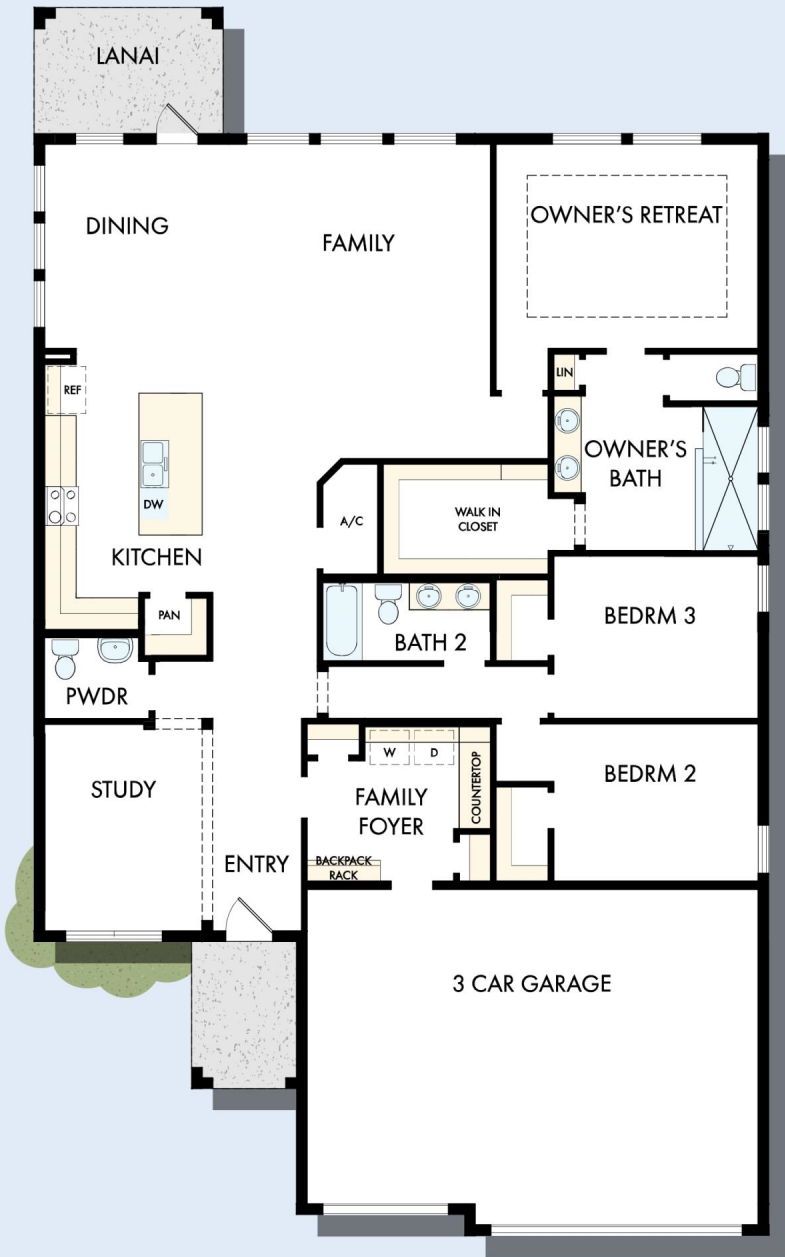
### **Welcome Home**

My DWHome experience has been truly 5-stars! From a floorplan concept, reserving a lot filled with dirt, the homebuilding project, to "Welcome Home", the entire process has been amazing. The team provided regular feedback and were always available to address questions and concerns. I was sold on the quality features. The entire team's availability and service has been exceptional before and after closing. Looking forward to enjoying our new home and neighbors for many years to come!

**David Weekley  
Homes**

# THE FISHBECK

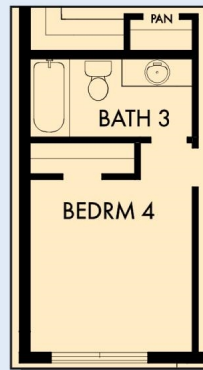
2,298 - 2,346 sq. ft. • 3 - 4 Bedrooms • 2 - 3 Full Baths • 0 - 1 Half Baths • 3 Car Garage



OPTIONAL EXTENDED LANAI WITH SLIDING GLASS DOOR AT FAMILY



OPTIONAL EXTENDED OWNER'S RETREAT



OPTIONAL BEDROOM 4 WITH BATH 3 AT STUDY



OPTIONAL FREE STANDING TUB WITH SEPARATE SHOWER AT OWNER'S BATH

F054 in 3949 TAM

For additional options, please visit [DavidWeekleyHomes.com](http://DavidWeekleyHomes.com)

12/24/2024

See a David Weekley Homes Sales Consultant for details. Prices, plans, dimensions, features, specifications, materials, and availability of homes or communities are subject to change without notice or obligation. Illustrations are artist's depictions only and may differ from completed improvements. Copyright © 2024 David Weekley Homes - All Rights Reserved. Tampa, FL

**DavidWeekleyHomes.com**

