

# THE BRUMFIELD



Exterior A

2,602 - 2,739 sq. ft.

4 - 5 Bedrooms

3 Full Baths

3 Car Garage



Exterior B

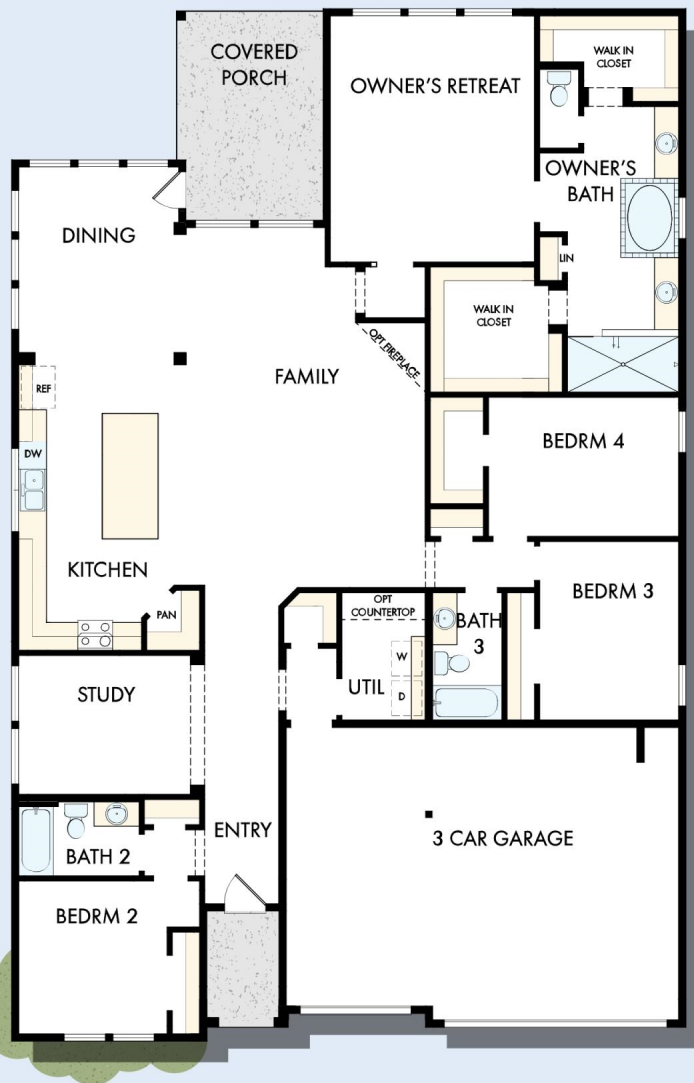
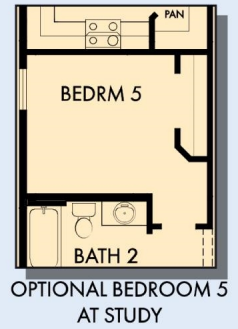
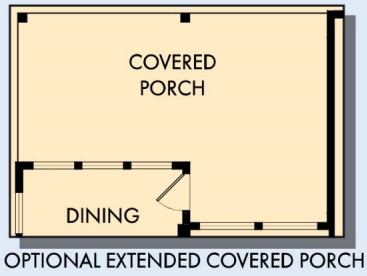


Exterior C

David Weekley  
Homes

# THE BRUMFIELD

2,602 - 2,739 sq. ft. • 4 - 5 Bedrooms • 3 Full Baths • 3 Car Garage



B445 in 2205 AUS

For additional options, please visit [DavidWeekleyHomes.com](http://DavidWeekleyHomes.com)

6/21/2024

See a David Weekley Homes Sales Consultant for details. Prices, plans, dimensions, features, specifications, materials, and availability of homes or communities are subject to change without notice or obligation. Illustrations are artist's depictions only and may differ from completed improvements. Copyright © 2024 David Weekley Homes - All Rights Reserved. Austin, TX

**DavidWeekleyHomes.com**

